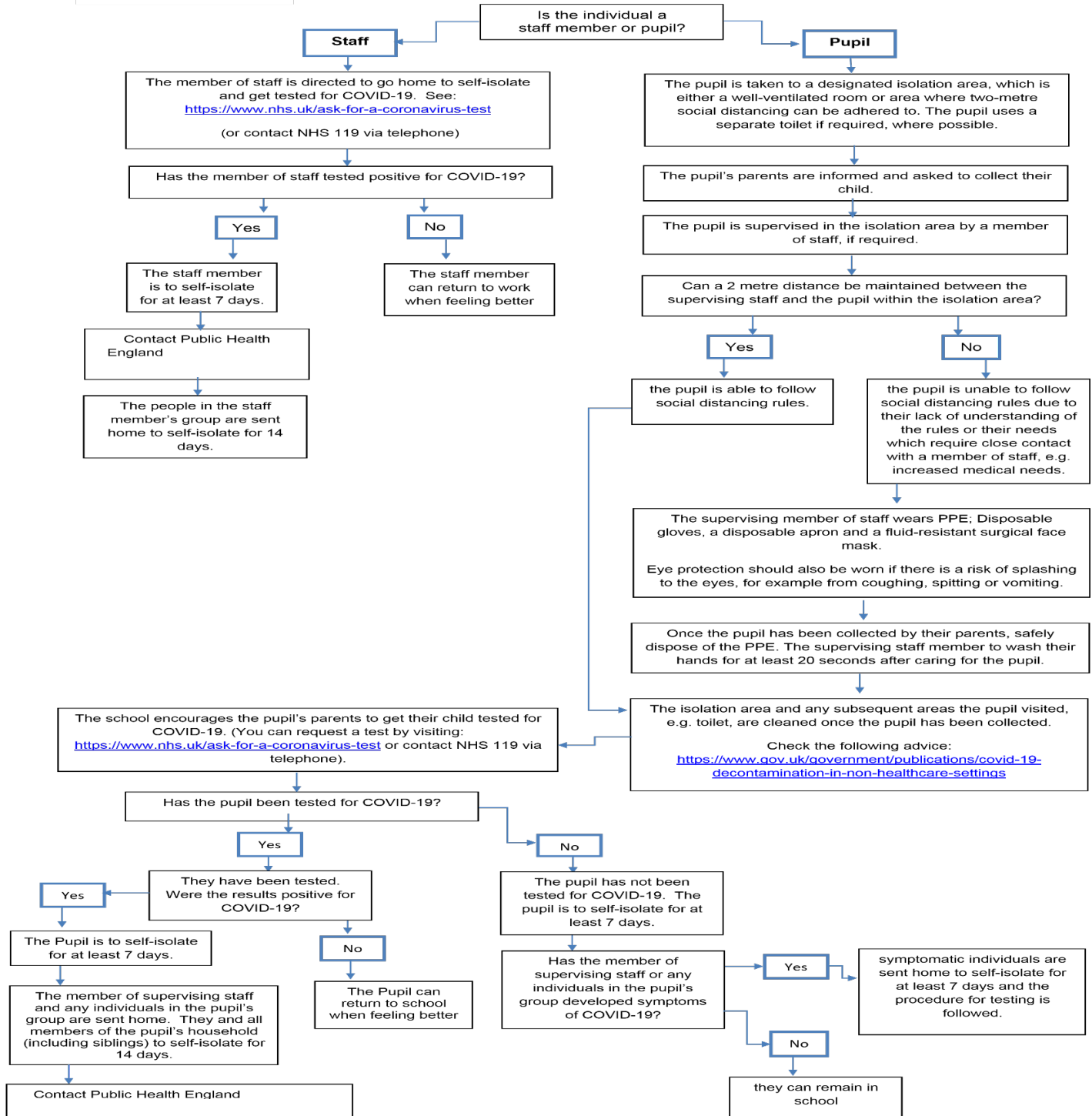


Procedures for managing a suspected or confirmed case of Covid-19

Please see below the flow chart produced by Birmingham City Council and Public Health England 'COVID-19 How to deal with symptoms in a member of staff or pupil in an educational setting'.

In the event of a suspected or confirmed case of Covid-19 within school, we will be following these procedures and their associated actions.





Procedures for managing a suspected or confirmed case of Covid-19



Procedures for pupils exhibiting symptoms of Covid-19

If a child shows any of the symptoms associated with Covid-19 whilst at home, parents/carers should inform the school immediately and arrange for their child to be tested.

In the event that a child shows any symptoms related to Covid-19 whilst in school, they will be taken to an isolation room and their parent/carer will be contacted to collect them and to arrange for the child to be tested for Covid-19.

The symptoms currently associated and officially recognised as related to Covid-19 are:

- A new continuous cough
- A high temperature
- Loss or change of smell or taste

When the result of the test is confirmed, school must be informed immediately so that the appropriate steps can be taken as outlined below:

- 1) If the result is negative and the child is well, they return to school as normal.
- 2) If the test results are positive, the child will need to remain in isolation for 7 days.

If the child tests positive:

- School will inform all parents of children in that group, along with staff who work in the group, of the positive test result
- All individuals in the group (staff and children) and all household members of the child who has tested positive will be asked to self-isolate for 14 days
- Public Health England will be informed of the positive test and following actions

*Please be aware that if a child has symptoms and is not tested for Covid-19, they will need to remain in isolation for 7 days.

Procedures for staff exhibiting symptoms of Covid-19

If a member of staff shows any of the symptoms associated with Covid-19 they will be asked to stay at home and self-isolate, and arrange to be tested. If the member of staff is at school when they first experience symptoms, they will be sent home immediately asked to self-isolate and arrange to be tested for Covid-19.

The symptoms currently associated and officially recognised as related to Covid-19 are:

- A new continuous cough
- A high temperature
- Loss or change of smell or taste

- 1) If the result is negative and the staff member is well, they return to school as normal.
- 2) If the test results are positive, the staff member will need to remain in isolation for 7 days.



Procedures for managing a suspected or confirmed case of Covid-19



If the staff member tests positive:

- School will inform all parents of children in that group, along with other staff who work in the group, of the positive test result
- All individuals in the group(staff and children) and all household members of the staff member who has tested positive will be asked to self-isolate for 14 days
- Public Health England will be informed of the positive test and following actions

Important Information

Unless your child is unwell, parents will not routinely be informed that a child is exhibiting symptoms within school. However, if someone in your child's group receives a positive test result, you will be informed as quickly as possible and advised of further actions.