

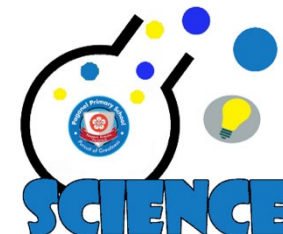
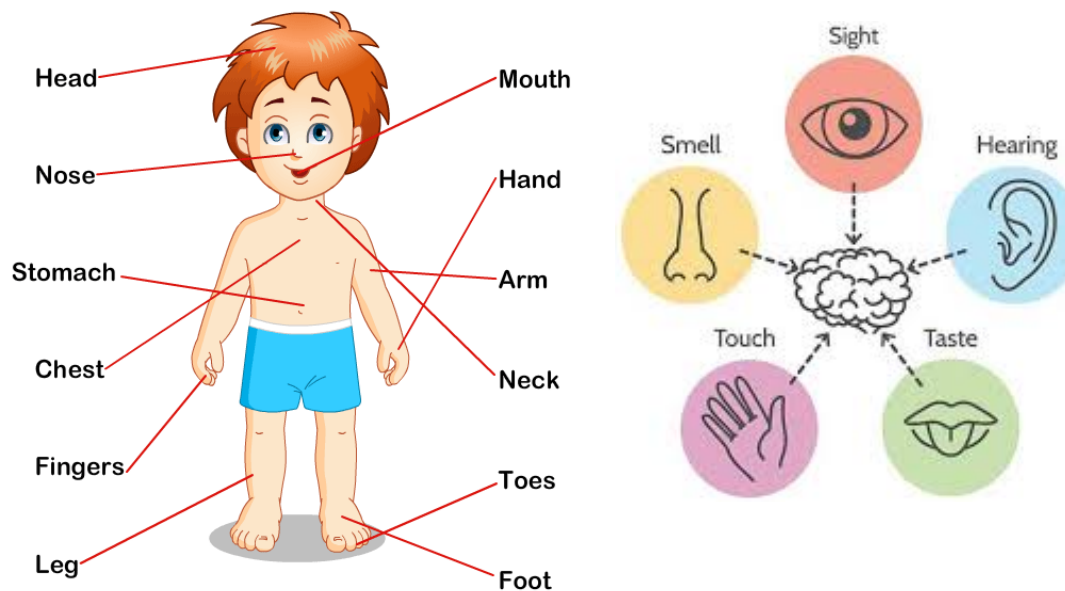
What? (Key Knowledge)	
Humans	
Human beings	<ul style="list-style-type: none"> We are called humans We are from the family of animals called mammals
Basic parts of the human body	Hair, head, ears, eyebrows, eyes, nose, mouth, chin, neck, shoulder, chest, elbow, arm, wrist, hand, tummy, knee, leg, ankle and foot
There are 5 basic human senses	Touch, taste, smell, sight and hearing
How do we touch?	We touch using our skin (usually our hands)
How do we taste?	We taste by putting something in our mouth
How do we smell?	We smell by using our nose
How do we see?	We see by using our eyes
How do we hear?	We hear by using our ears
Animals	
6 types of animals	<ul style="list-style-type: none"> Invertebrates Fish Amphibians Reptiles Birds Mammals
Some common invertebrates	Crab, jellyfish, worm
Some common fish	Goldfish, cod, shark
Some common amphibians	Frog, toad, newt
Some common reptiles	Snake, crocodile, lizard
Some common birds	Sparrow, chicken, owl
Some common mammals	Human, dog, lion
Animals that eat meat	Animals that eat other animals are called carnivores
Animals that eat plants	Animals that eat plants are called herbivores
Animals that eat meat and plants	Animals that eat both plants and other animals are called omnivores
Some common carnivores	Lion, tiger, brown bear
Some common herbivores	Cow, sheep, rabbit
Some common omnivores	Human, pig, rat

What? (Key Vocabulary)	
Spelling	Definition/Sentence
Invertebrates	Animals with no back bone
Fish	An animal with gills and fins that lives in water
Amphibians	An animal which can live on land or in water
Reptiles	An animal which has dry, scaly skin and lays eggs on land
Birds	An animal with feathers, wings and a beak that is usually able to fly
Mammals	An animal that feeds its young with milk from the mother and has skin usually more or less covered with hair
Pet	A friendly animal trained to live with humans

Take it further at home...

- Try finding and classifying animals in different environments
- Have a look online at songs that help children recall the main parts of the body
- Explore different senses through blind taste feasts, touchy feely bags, going somewhere new and writing down everything you can hear and see!
- Match the words with the body part
- Fill in the vocabulary chart – try and do this from memory with them!

Diagrams and Symbols



Draw a line from each word to the correct part of the body.

Ears

Mouth

Neck

Hand

Leg



Eyes

Arm

Stomach

Knee

Foot

What? (Key Vocabulary)

Spelling	Definition/Sentence
Invertebrates	
	An animal with gills and fins that lives in water
	An animal which can live on land or in water
Reptiles	
	An animal with feathers, wings and a beak that is usually able to fly
	An animal that feeds its young with milk from the mother and has skin usually more or less covered with hair
Pet	

