



Paganel Primary School – Summer Term Knowledge Organiser

Year Group: 4 Topic: Young Entrepreneurs.

Prior knowledge

- Children have studied some great artists, architects and designers in Art and Culture Week.
- Children have explained the impact of a design or designer on design history and how this helped to shape the world.
- Children have created a chronological timeline of Significant People
- Children understand and can explain how a significant figure of a period influenced change.
- Children have planned, made and evaluated various Design and Technology and Art and Design projects

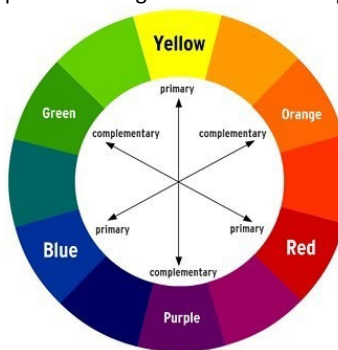
Key Knowledge

- The **British Empire** began in the 16th century where the British began controlling other countries and states. At its height of power **23% of the population** of the world were part of the British Empire. All these countries are now independent from the UK but some are part of the **Commonwealth**.
- The UK **Parliament** is made up of the **House of Commons** and **House of Lords**. It is responsible for making laws, deciding taxes and scrutinising the **Government**.
- **Fashion** has changed through the **decades**. You can see here how the fashion for women has changed on a small **timeline**, influenced by styles and world events:

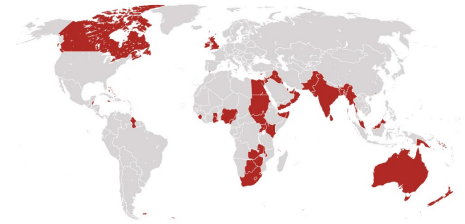


- **80 billion** items of clothes are bought every year.
- **318 billion** toys are bought every year.

Key Vocabulary

Spelling	Definition/Sentence
Fashion	A popular or the latest style of clothing.
Empire	Lots of countries/states controlled by one government or monarch.
Influence	To have an effect on someone or something which can be positive or negative.
Civilisation	The society, culture, and way of life of a particular area or country.
Parliament	Parliament is the government that represents and controls a country
Timeline	A visual representation of a period of time, on which important events are marked.
Fabric	Cloth produced by weaving or knitting textile fibres.
Impact	How something has changed history or people's ideas in the future.
Purpose	What the object is used for. For example: the purpose of a coat is to keep you dry and warm.
Mood board	A collection of images to represent a theme or idea
Close up observational drawing	Looking at an object in close detail and drawing as realistically as possible.
Complementary and contrasting colour	Colours found directly across each other on the colour wheel. Complementary colour schemes provide strong contrast. For example: 
Internal shapes	Shapes such as windows cut out of a larger shape such as a wall.
Tone	Light and dark shades in a drawing

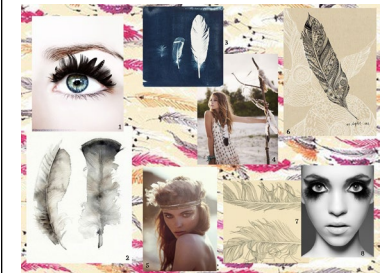
Images and Diagrams



Map of the British Empire at the height of power.



Example timeline of fashion from 1900s to 1950s.



Mood board based on feathers



A tie dye scarf